



Let **UK** Home

3 Bedrooms

Flat

Located in London

£27,083 Per Month



info@letukhome.co.uk

<https://www.letukhome.co.uk/>

01795 358 886



11-13 Young Street London

W8 5EH



A spectacular and unique newly refurbished interior designed duplex Penthouse apartment, set over 3,664 Sq ft, offering three spacious double bedrooms, two en-suite bathrooms, family bathroom, guest WC all within this boutique modern building in the heart of fashionable Kensington.

Via a private lobby, you enter an apartment which has been created for a luxurious bright and opulent living experience. The reception and dining room comes complete with expansive windows and an open plan, fully integrated kitchen/breakfast room, offering spectacular entertaining and living spaces.

A stunning customized glass staircase offers uninterrupted double height views across London, which in turn leads you up into a unique entertainment and relaxation space offering several lavish areas as well as comfortable dining for 10 people. The open plan feel combines perfectly with two stunning outdoor seating areas that extends seamlessly through from the multiple Bi Folding doors.

The apartment further benefits, ample storage space, underfloor heating, lift service, built in audio visual system, air conditioning.

Ideally located, the property is moments away from High St Kensington and South Kensington (Piccadilly, District and Circle lines) underground stations.

11-13 Young Street London

£27,083 Per Month

- 5th Floor
- On site porter
- Private roof gardens
- Minimum term of six months
- Lifts

- Duplex penthouse apartment
- 24 hour maintenance service
- Open plan
- Available furnished or unfurnished
- EPC Rating: D



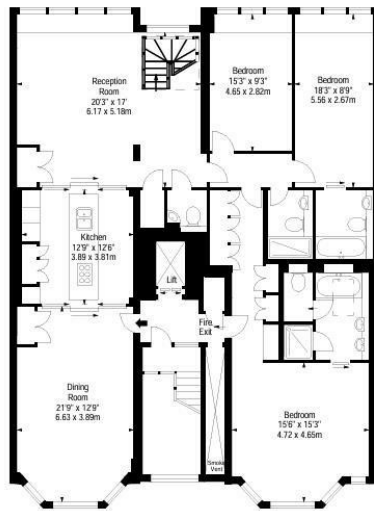


Let **UK** Home

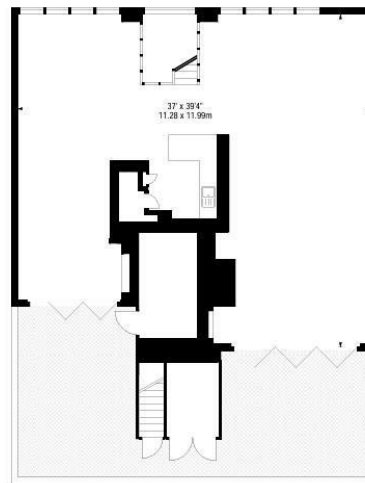
3F 2 Eastbourne Terrace
 Paddington
 London
 W2 6LG

01795 358 886

info@letukhome.co.uk



FIFTH FLOOR

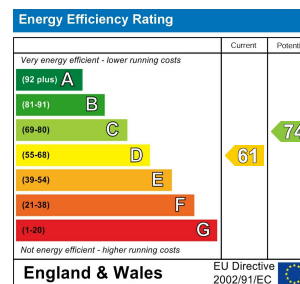


SIXTH FLOOR

Council Tax Band: H

Local Authority:

Agents Note: Whilst every care has been taken to prepare these particulars, they are for guidance purposes only. All measurements are approximate and are for general guidance purposes only and whilst every care has been taken to ensure their accuracy, they should not be relied upon and potential buyers/tenants are advised to recheck the measurements.



<https://www.letukhome.co.uk/>